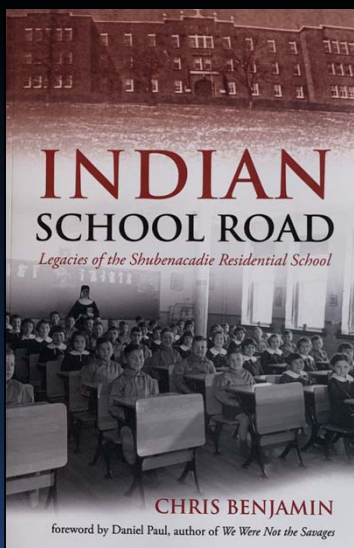
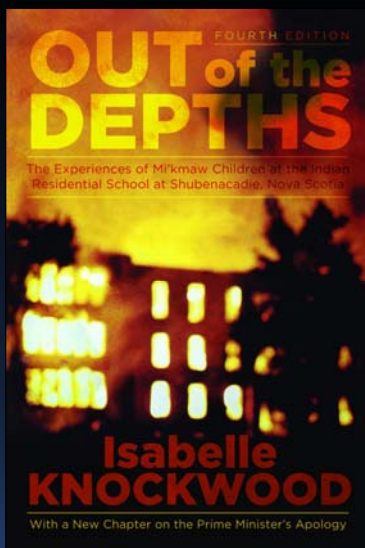


The Shubenacadie Search

Jonathan Fowler and Roger Lewis
24 October 2022



1



Background

1929 – 1967

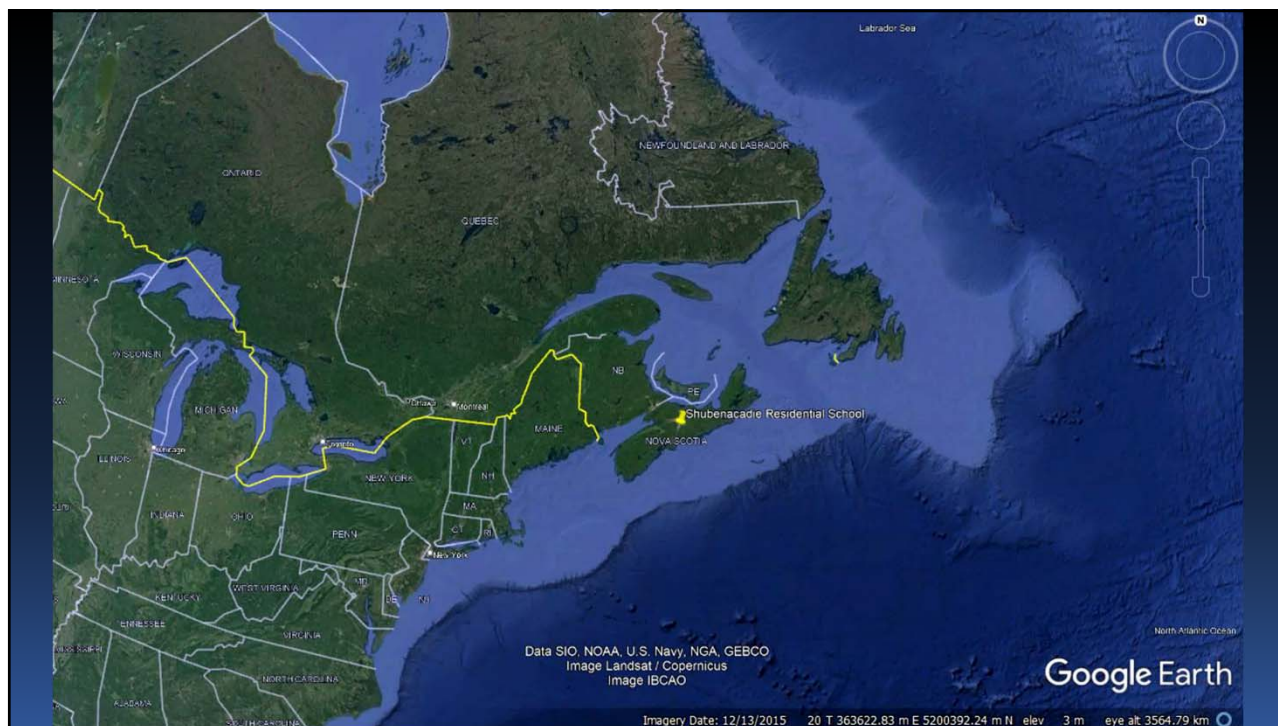
59 ha (146 acres)

ca. 2,000 children

16 recorded deaths (TRC)
(*17)

no formal cemetery

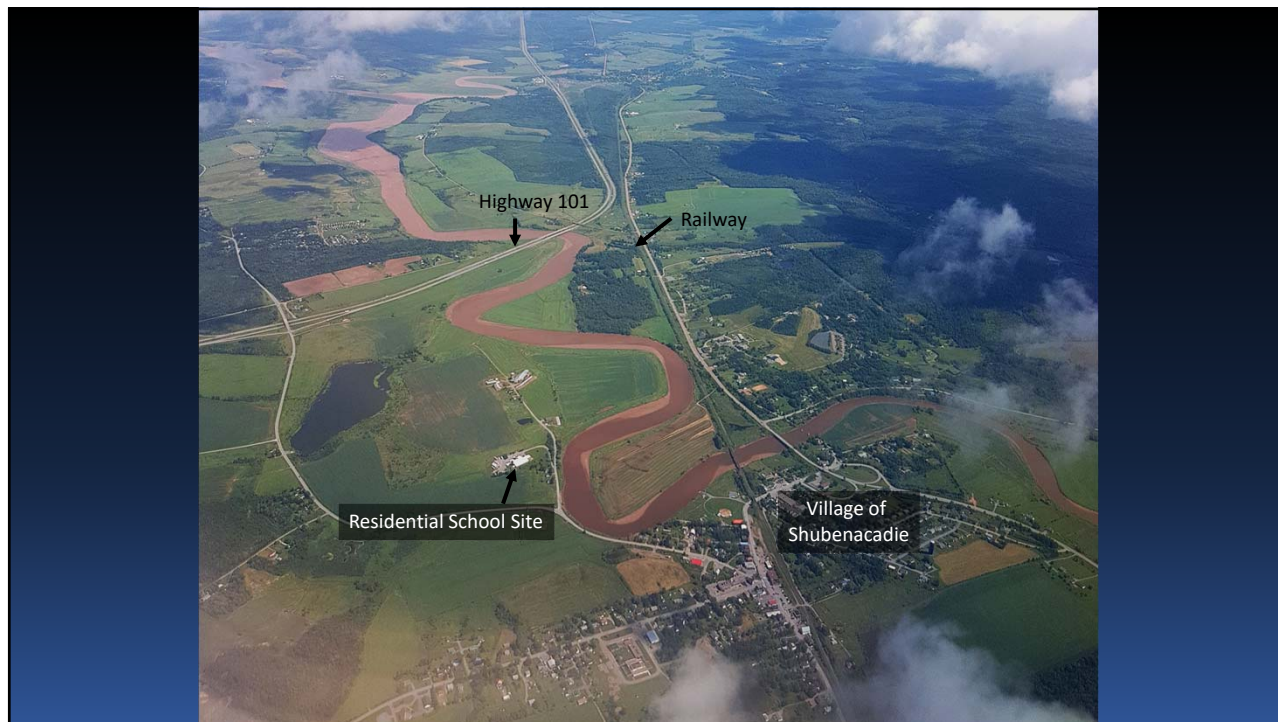
2



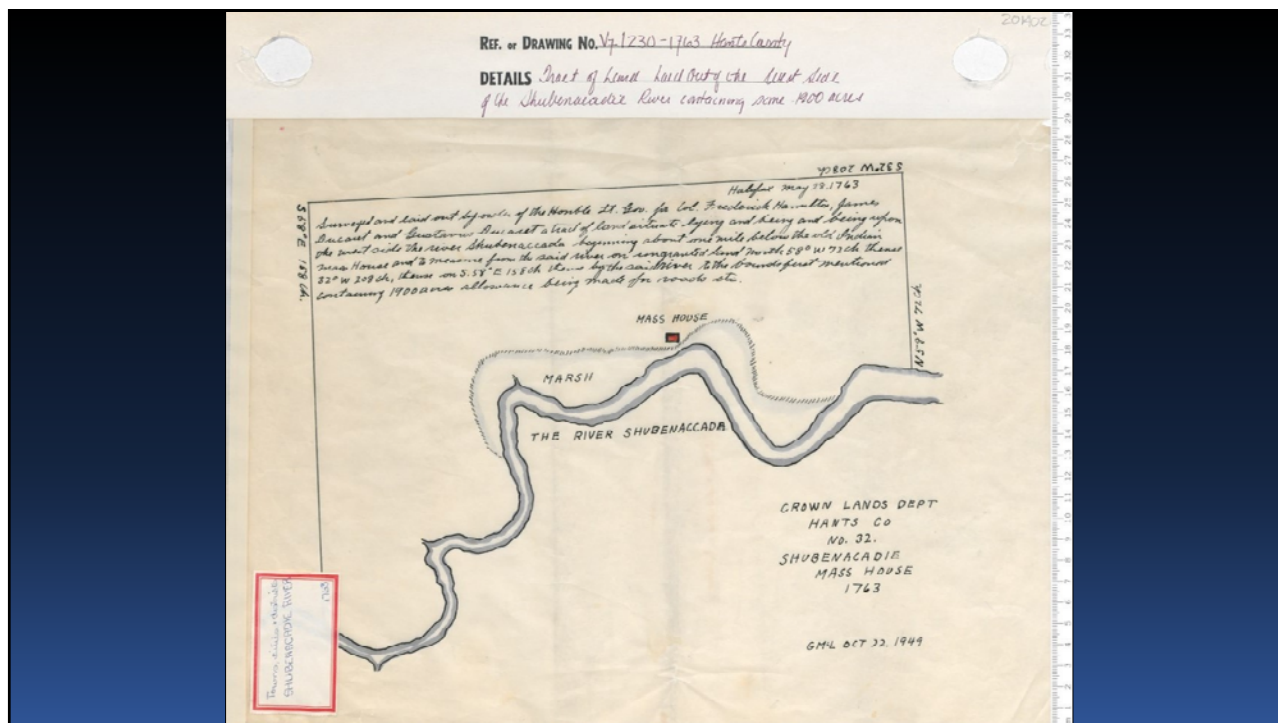
3



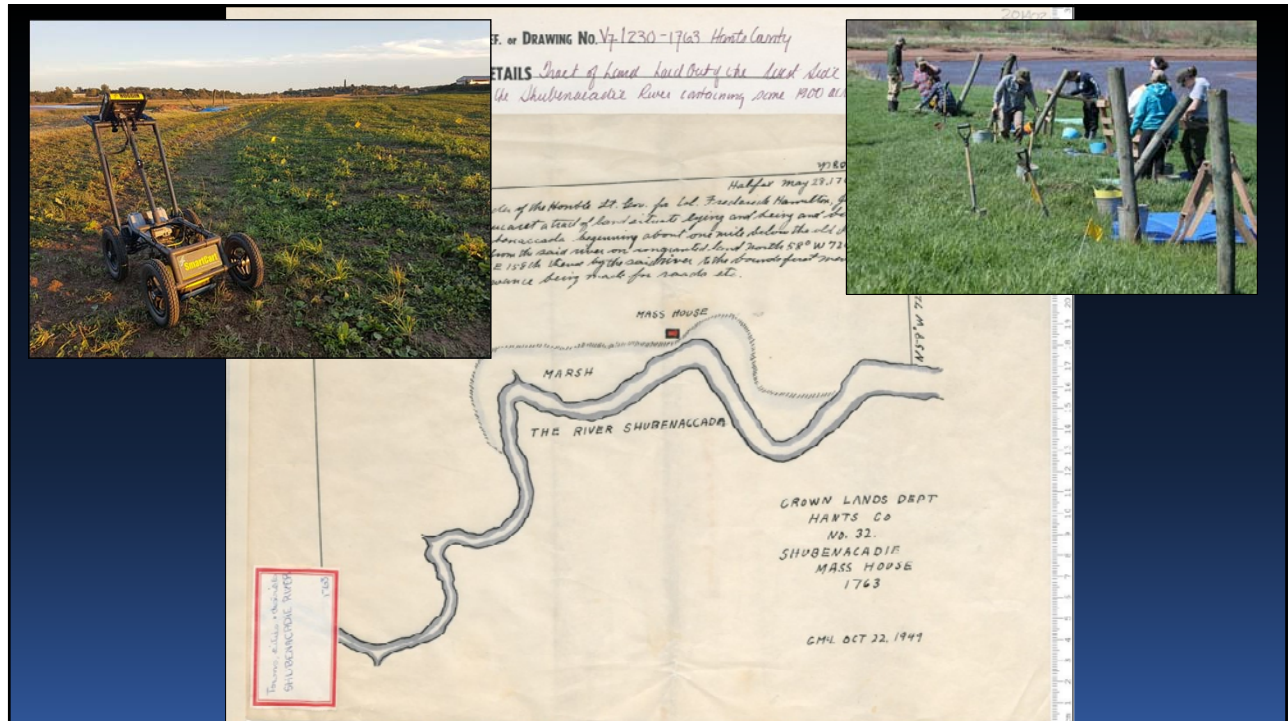
4



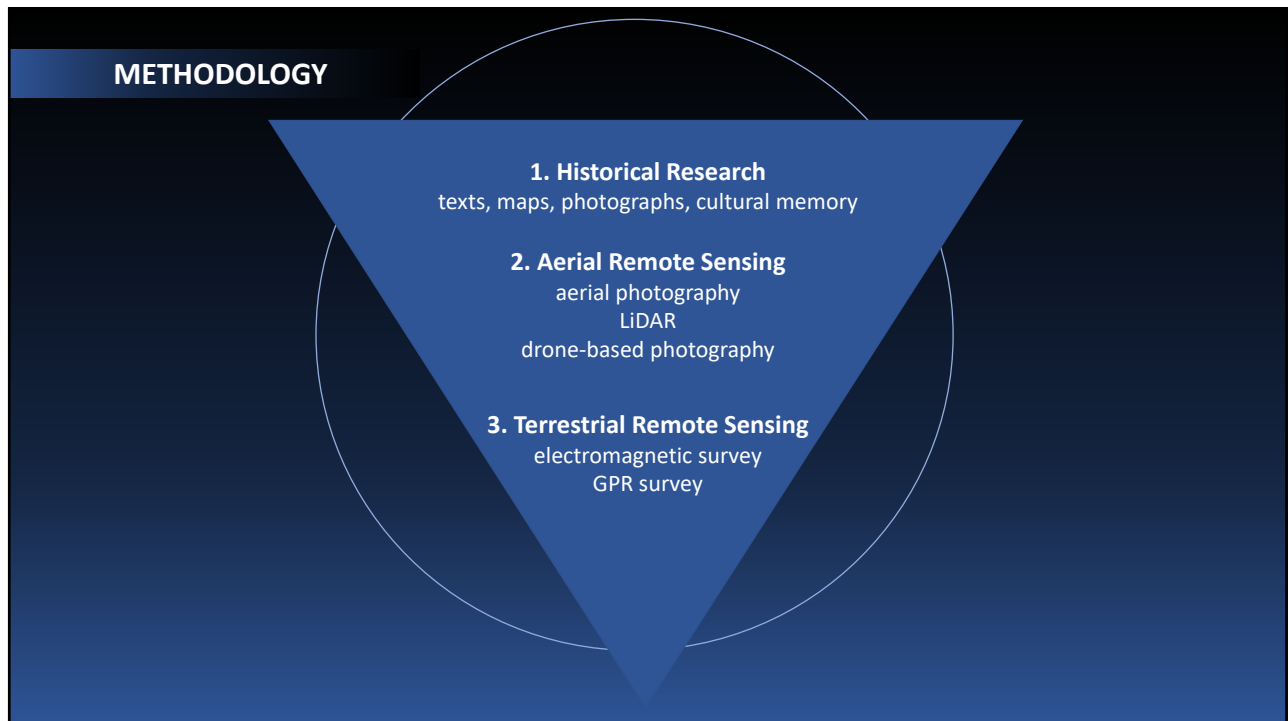
5



6



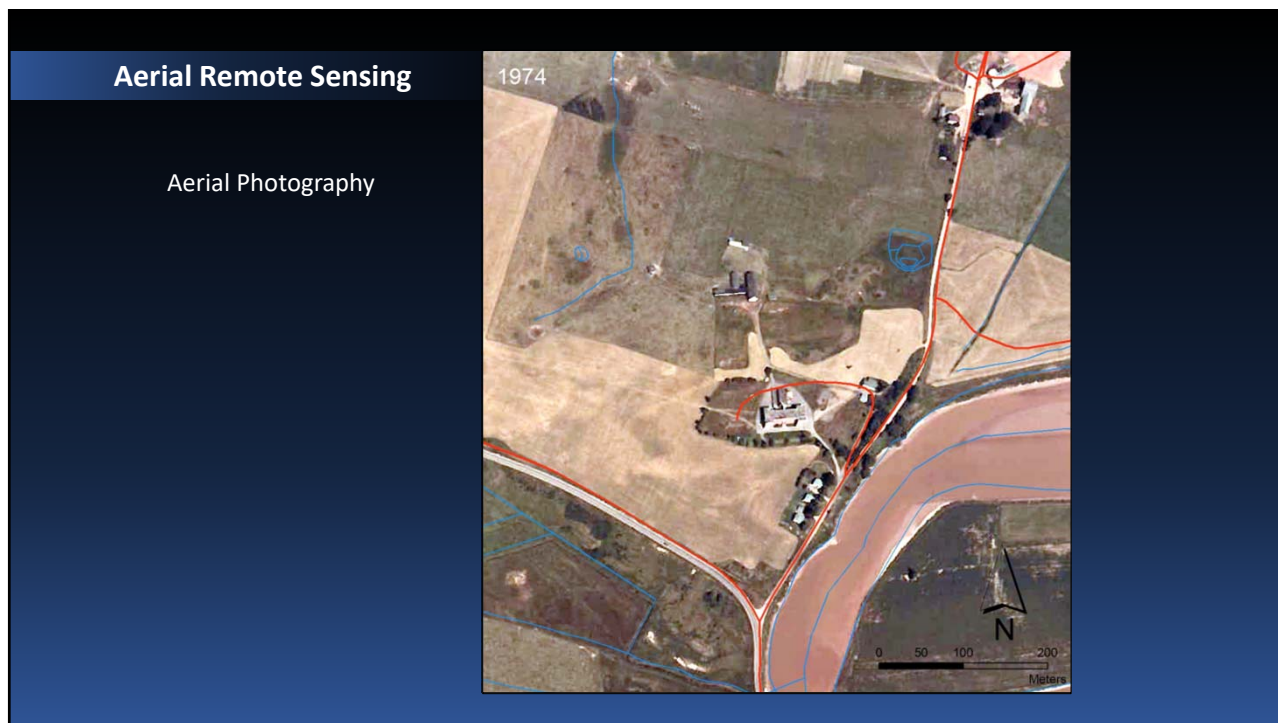
7



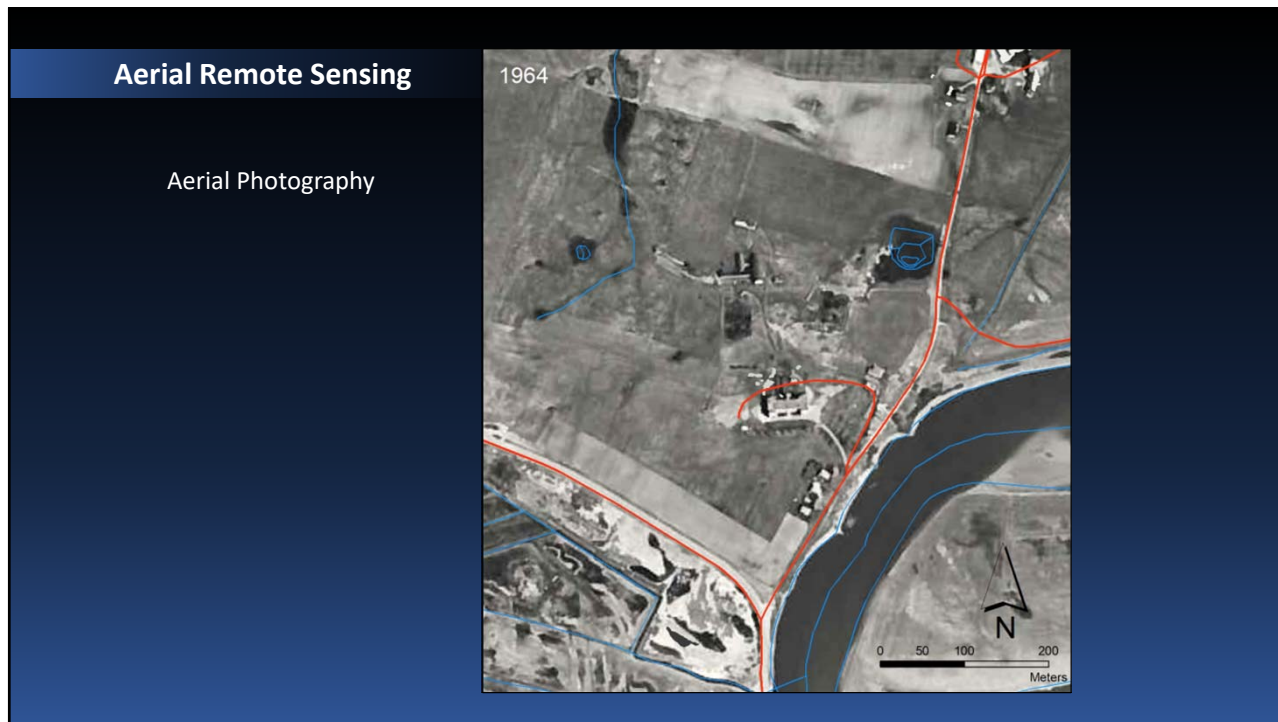
8



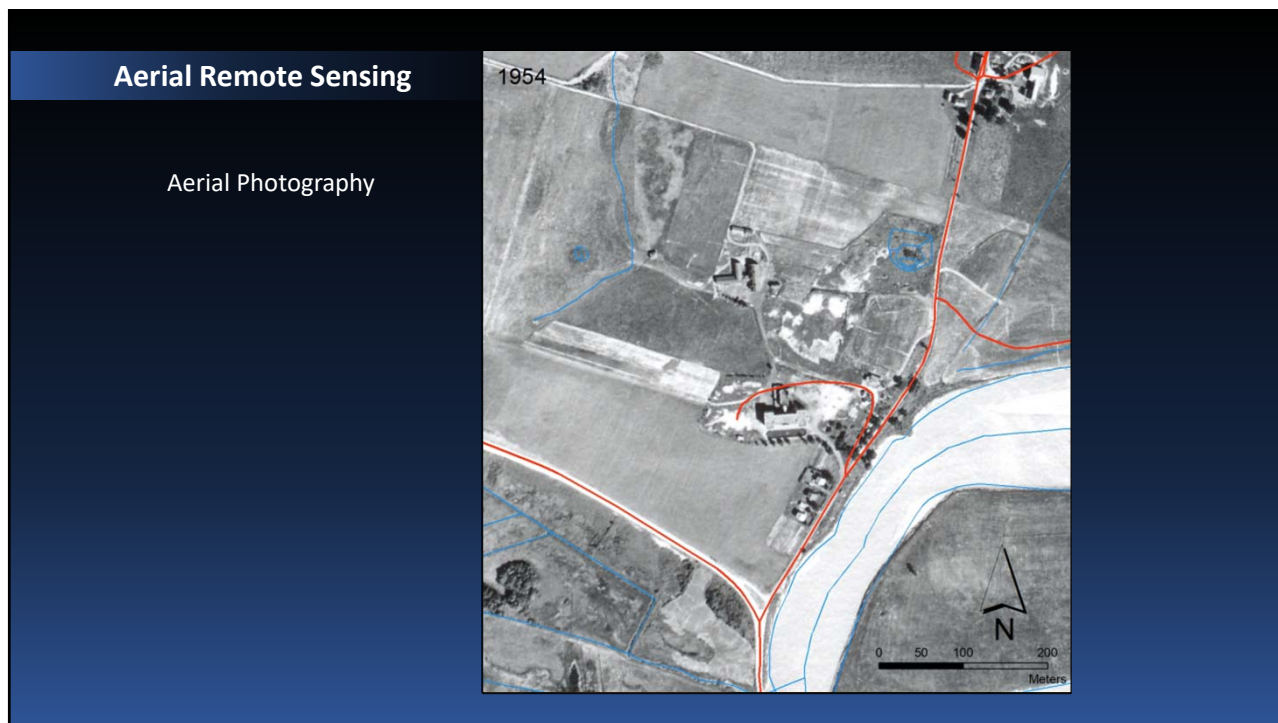
9



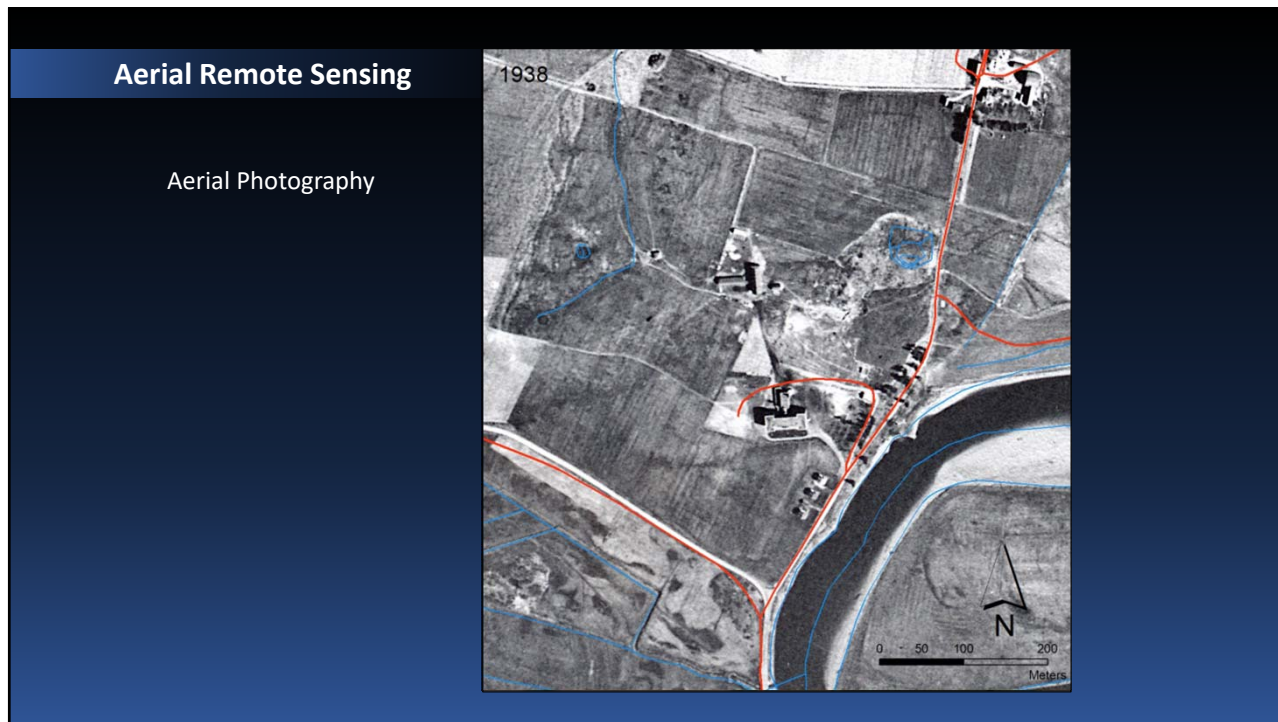
10



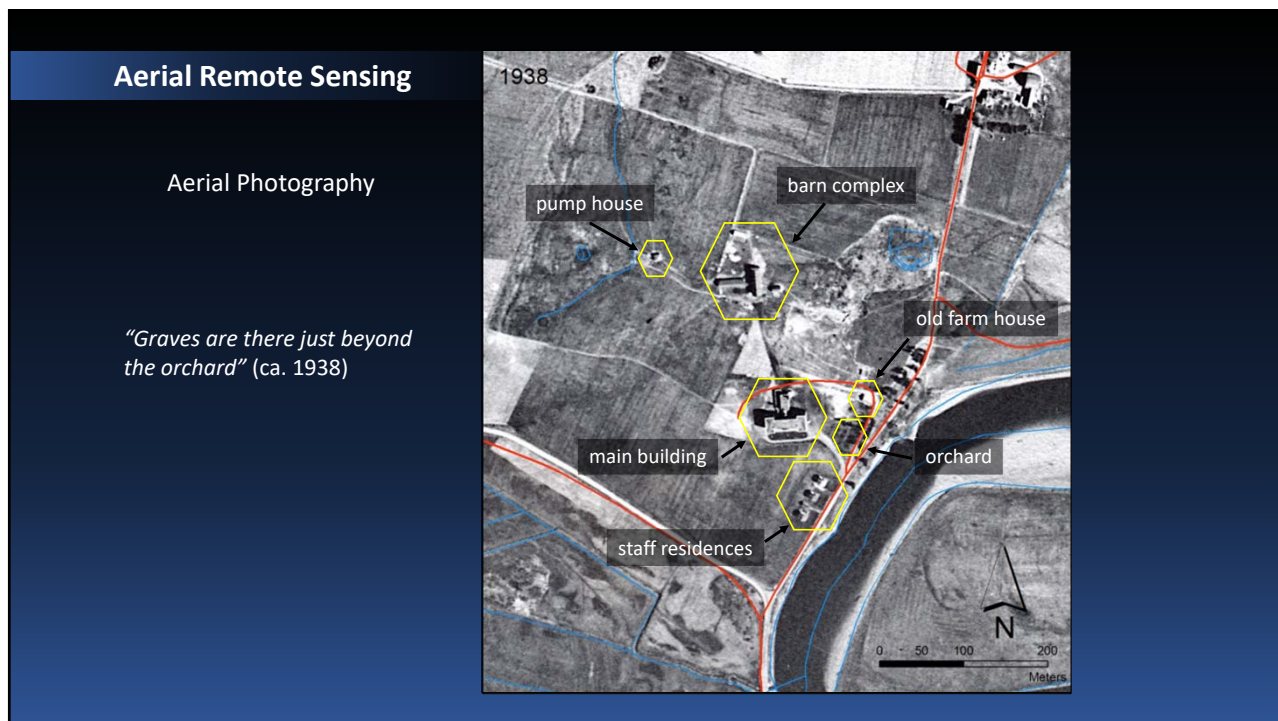
11



12



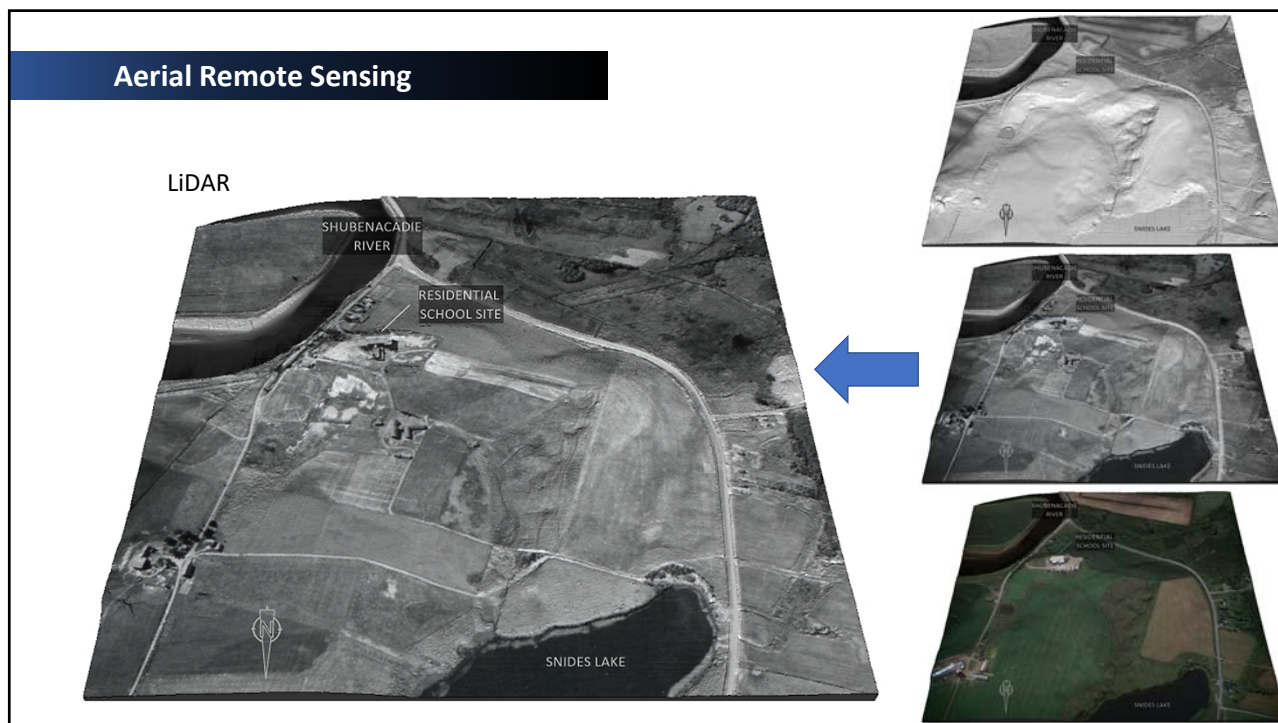
13



14



15



16

Aerial Remote Sensing

**Aerial Photography
(drone based)**

Total Number of Photos Collected: 2200



Total Area Covered: 208 ha (514 acres)
Total RPA Flight Distance: 70 km

Total Point Cloud Points: 936.2 million
Average Point Cloud Points per Square Metre: 450

Expected Horizontal Accuracy: < ~1.0 cm
Expected Vertical Accuracy: < ~1.5 cm

Final Ground Sample Distance (resolution): 2.5 cm

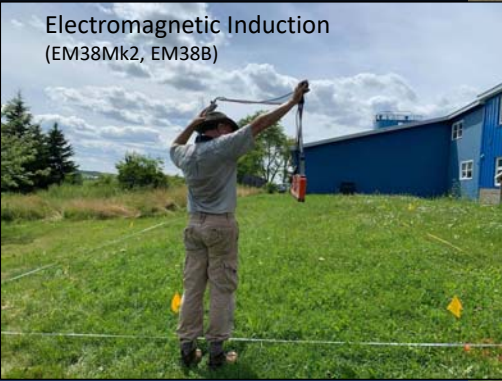
Full Point Cloud File Size: 29.6 gb
Full Mosaic File Size: 11.5 gb
Full DSM File Size: 9.8 gb


17

Terrestrial Remote Sensing

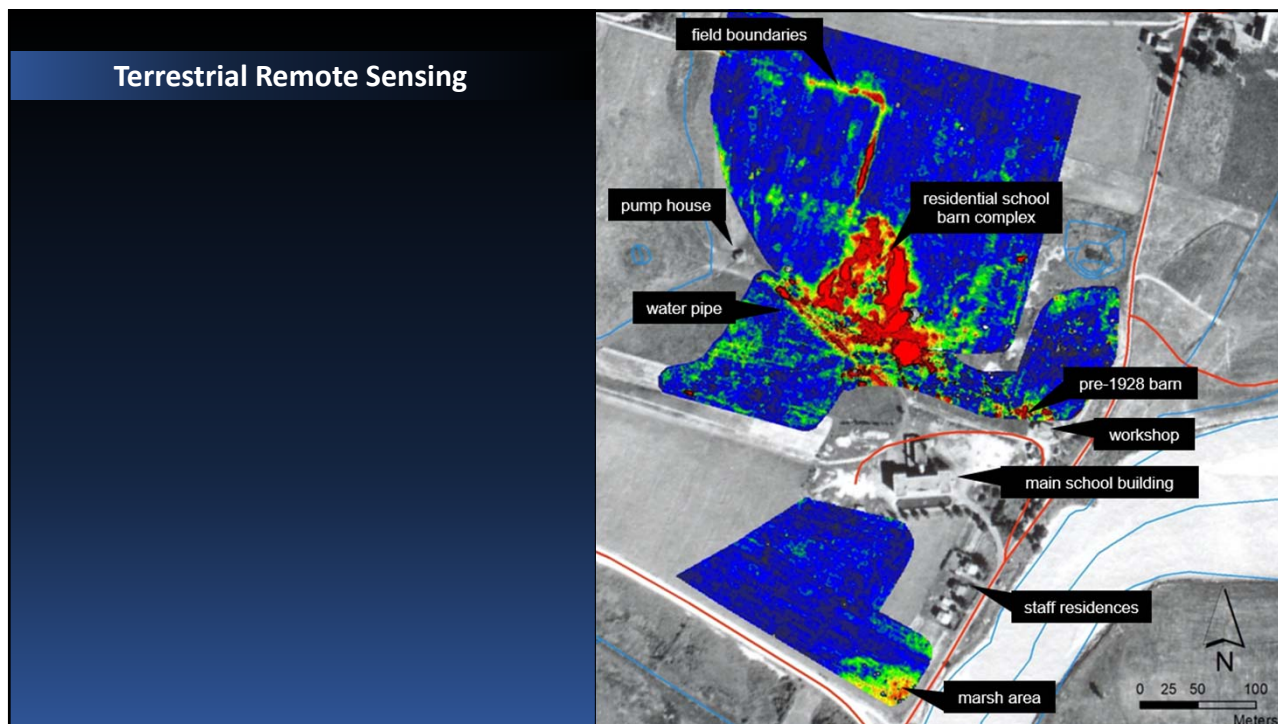
**Electromagnetic Induction
(EM38Mk2, EM38B)**



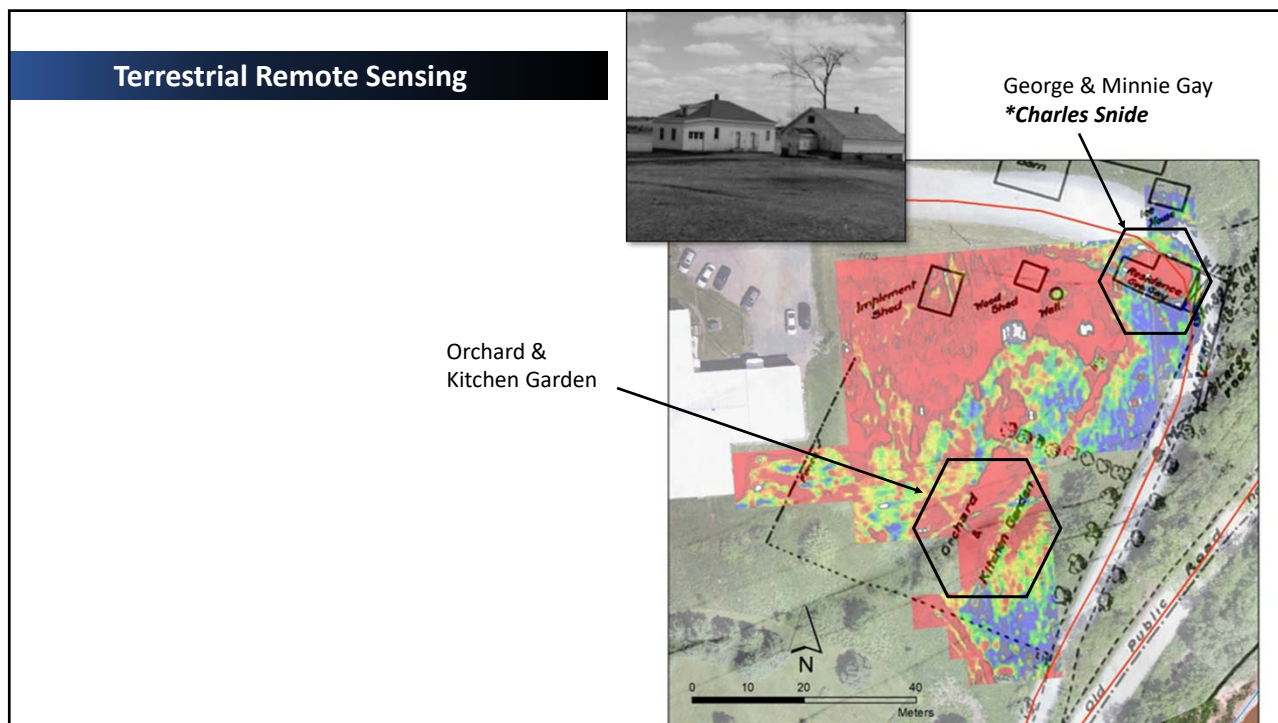
20 EM38 grids
12.4 hectares (30.6 acres)
768 lines of data
79km walking



18



19



20

Terrestrial Remote Sensing

Ground-Penetrating Radar
(Noggin 500)



GPR grids
0.33ha (0.81 acres)
1187 lines of data
28km walking

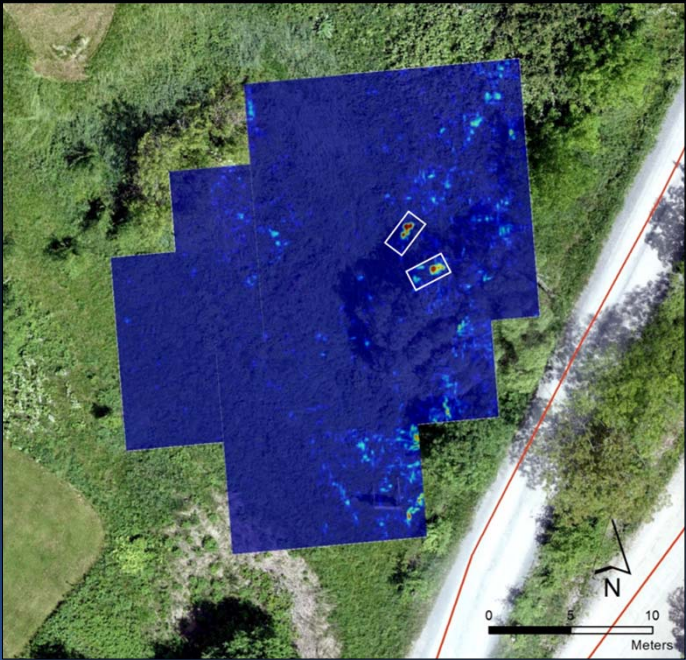
0 10 20 40
Meters

Detailed description: This slide features a blue header with the text 'Terrestrial Remote Sensing'. Below it, the title 'Ground-Penetrating Radar (Noggin 500)' is displayed. The main visual is an aerial photograph of a grassy field. A large white rectangular area is divided into 12 smaller numbered grids (1-12). A red line traces a path around the field. An inset photograph shows two individuals in field gear operating a GPR machine on a grassy area. A scale bar at the bottom right indicates 0, 10, 20, and 40 meters, with a north arrow pointing upwards.

21

Terrestrial Remote Sensing

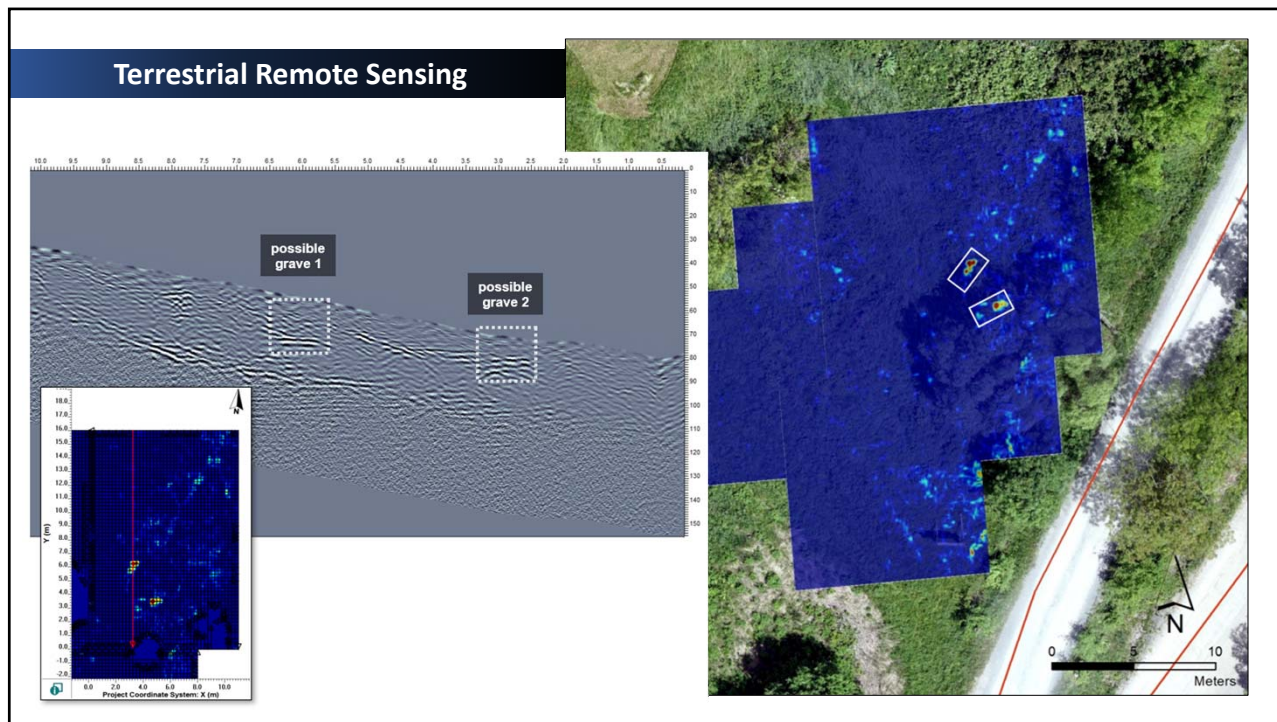
Ground-Penetrating Radar
(Noggin 500)



0 5 10
Meters

Detailed description: This slide has a blue header with 'Terrestrial Remote Sensing'. The title 'Ground-Penetrating Radar (Noggin 500)' is shown. The main image is an aerial view of the same field as slide 21, but with a large blue rectangular area overlaid, representing the GPR data. Two small yellow boxes with black outlines highlight specific features within the blue area. A scale bar at the bottom right shows 0, 5, and 10 meters, with a north arrow pointing upwards.

22



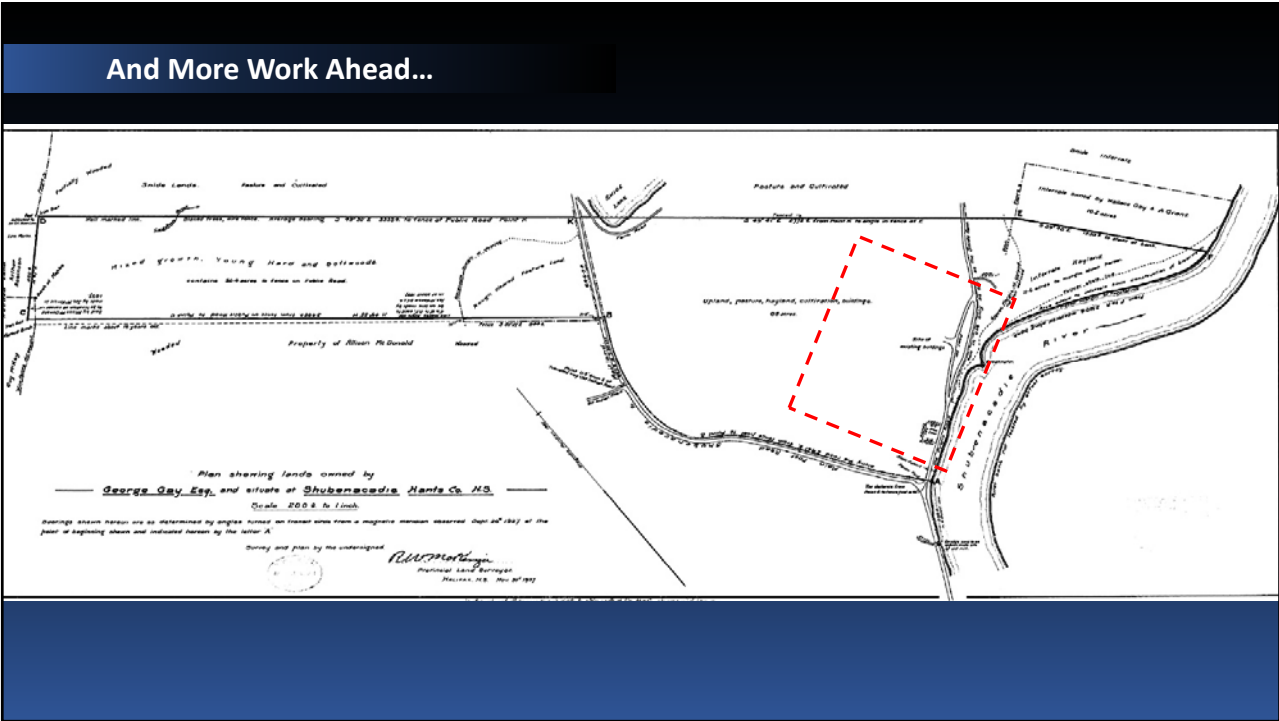
23

Back to Historical Research

James and Sarah Ellis, the Irish immigrants who lived here in the late 1700s, "are buried on Indian Hill below where Charles Snide long lived" (Nelson 1898, 22).

*avid success, making money out of butter, cheese
are the interest of the micmas,
long accustomed to congregate at or near his home, ...
Joe Brooks to read English.
me, or himself very aged, aided Dr
elation of the scriptures.
man, very humorous, fond of
music and able to play well on the violin, well read
considering his chances, long the leading man of the dis-
trict, after some years of helplessness and blindness,
he passed away in 1820 aged 95 years and some months. He and
his wife are buried on Indian Hill below where Charles Snide long lived.*

24



25

To Learn More...

jonathan.fowler@smu.ca

Video summary of 2021 search:
<https://www.youtube.com/watch?v=FWS6zBm4g-w>

Shubenacadie Residential School
 Search Update
 29 July 2021

26